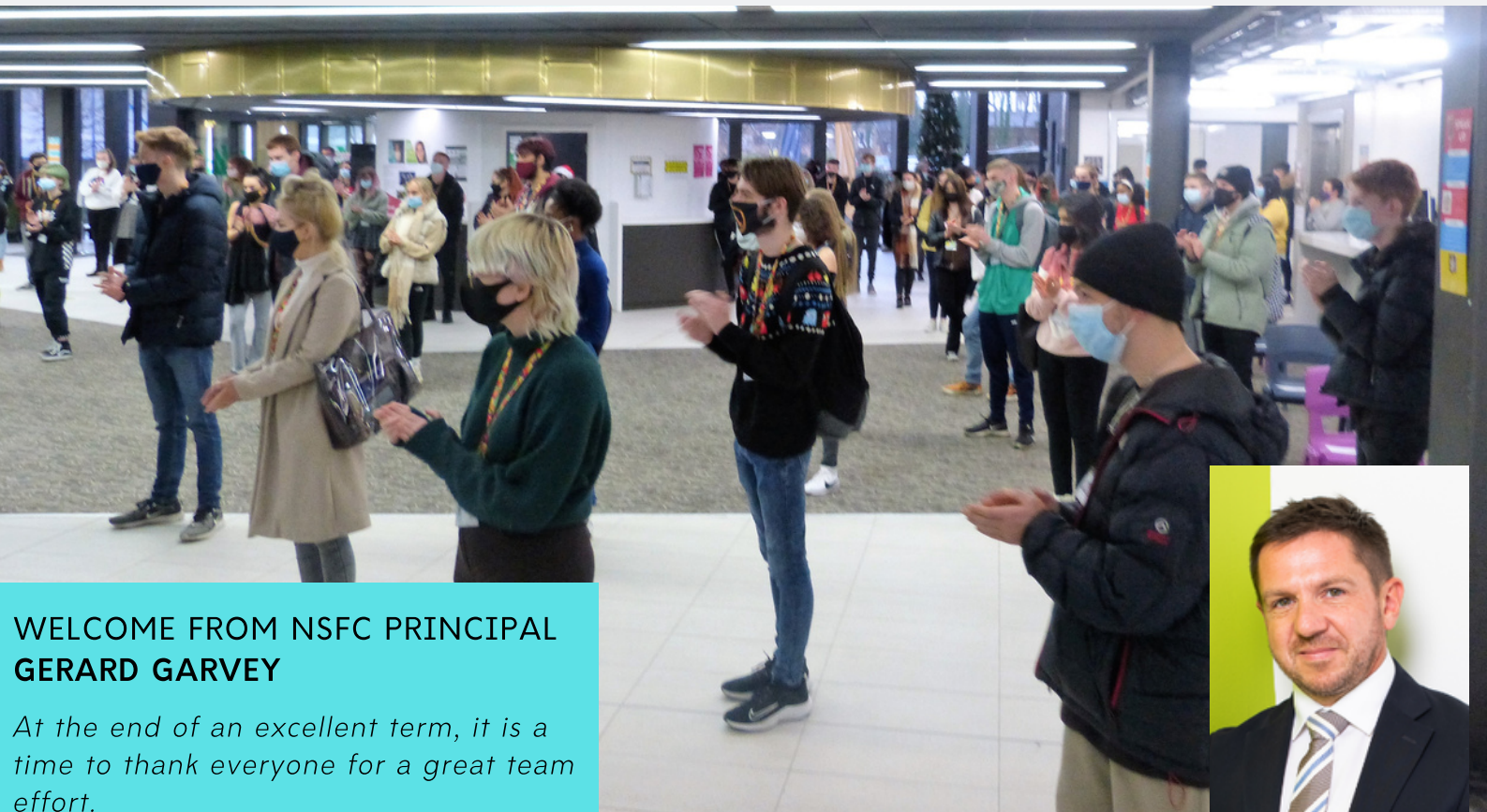


18 DECEMBER 2020



NSFC4ME

An update on College life



WELCOME FROM NSFC PRINCIPAL GERARD GARVEY

At the end of an excellent term, it is a time to thank everyone for a great team effort.

REASONS TO FEEL POSITIVE AFTER A HIGHLY PRODUCTIVE TERM

As we reach the end of a long and productive term, I would like to say thank you to everybody involved in making it so successful. I am proud to lead a college with such a hard working and considerate student body.

Walking around the building it is clear how seriously students are taking their studies, and it has been fantastic to see so many contributions to the student led West End Food Bank collection. This edition of the newsletter includes the results of the student survey. Thank you to all those who took the time to complete it and who gave such positive feedback. Having prioritised high quality face to face teaching, it is good to know that students appreciate it. We will work hard to look at how we can further develop what we do in the new year.

One thing that we are delighted to be restarting is our enrichment programme. With a mixture of face to face and online options this is a great opportunity for students to learn skills, meet new people and to build evidence for their personal statements. One of the positives from this unusual year has been the increasing number of parents who have contacted me directly. It has been wonderful to hear from you, and we are excited to be able to restart parents evenings in the Spring.

I would like to wish you and your families a restful and relaxing Christmas.

Yours faithfully,

Gerard

TEST AND TRACE TRIAL

A SUCCESSFUL MONTH SEES NATIONAL ROLL-OUT



IN JUST 18 DAYS WE COMPLETED 3,780 TESTS

The mass testing trial took a huge effort and has been quite a journey. Alongside the deployment of MoD staff to help manage the testing with our inhouse team, we had weekly visits from the Department of Health and Social Care, Department of Education, and the trial brought the college national recognition, with features in major publications and notifications of the success of the trial commending the sixth form and its students for their efforts and the professional and organised way in which the college adapted to the trial.

In this final week, we completed our final series of tests with no new positive cases to report and increased numbers of students returning to college from self isolation. The whole process has been a great success and reflects really well on our students.

Film crews were on site for a number of days making informative videos for the roll out nationally of a programme which starts in early January, and we look forward to being part of the national programme.

FROM TRIAL TO NATIONAL SCHOOLS PROGRAMME

Supporting this Test and Trace trial has been really important. The rapid tests programme needed to be tested in schools to check that logistically it could be rolled out and we have helped in developing the final programme which will now be extended to 4,000 schools across England from January 4th 2021.

Our testing programme will continue in line with the national programme now the trial has completed.

MOCK EXAMS

YEAR 13 - (11TH - 15TH JANUARY)



IMPORTANT NOTICE FOR ALL YEAR 13 STUDENTS

Our mock exam series is a vital part of your progression through college and this year we have a week of mock exams for all Year 13 students in the second week of term starting on Monday 11th January.

Timetable

Only attend college if you have an exam.

The normal college timetable is suspended for Year 13 students (11th - 15th Jan)

Check start times for exams. Morning exams start at 10.00am

Click [HERE](#) for a full details on the mock exams and additional information.

Subject	Day	Length of Paper	Timings
Art	Following week	See teachers	See teachers
Graphics	Following week	See teachers	See teachers
Biology	Fri AM	2h	1000 - 1200
Business	Fri PM	2h	1300 - 1500
Chemistry	Tues PM	2h	1300 - 1500
Computer Sci	Mon PM	2h30	1300 - 1530
Drama	Mon AM	1h30m	1000 - 1130
Economics	Weds AM	2h	1000 - 1200
Eng Lang	Mon PM	2h15m	1300 - 1515
Eng Lit	Weds AM	2h15m	1000 - 1215
Film	Thurs PM	1h30m	1300 - 1430
Geography	Mon AM	1h45m	1000 - 1145

Subject	Day	Length of Paper	Timings
Gov, Pol	Thurs AM	2h	1000 - 1200
History	Tues AM	1h45m	1000 - 1145
Law	Fri AM	2h	1000 - 1200
Maths	Weds PM	2h	1300 - 1500
Further Maths	See teachers	See teachers	See teachers
Media	Weds PM	2h30m	1300 - 1530
Physics	Mon Am	2h	1000 - 1200
Psychology	Thurs PM	2h	1300 - 1500
Religious Studies	Fri PM	3h	1300 - 1600
Sociology	Tues PM	2h	1300 - 1500
Spanish	Thurs AM	2h	1000 - 1200

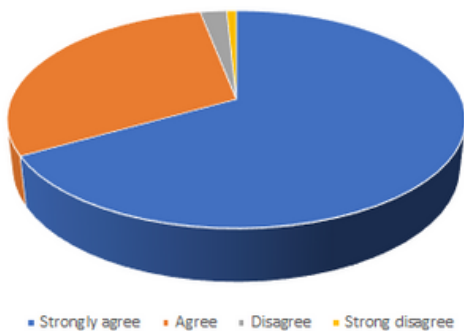
GREAT RESPONSE TO OUR STUDENT SURVEY

In our second student survey this term we hoped to build on the many positive comments and feedback we received from our initial survey.

We were delighted with the results, and with over 98% of our students saying the college is a safe place to learn, and 97% would recommend the college as a place to study. Across most areas student satisfaction increased. Students also commended the resources and support to learning.

We still have room for improvement, but this survey suggests that the college is moving in the right direction when it comes to supporting and engaging our students.

The college is a safe place to learn



STUDENT COMMENTS

'I am enjoying how challenging the course can be, as it pushes me to learn and develop new skills.'

First Year Biology Student

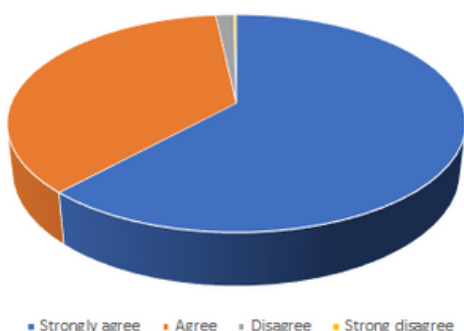
'Politics is the best time I've had in any sort of education. The experience is totally different from what I've done previously and I love it and can't wait for the next lesson'

First Year Politics Student

'I am enjoying this year a lot. Alan's teaching method gives us good amount of opportunities to work independently at our own pace but also do a lot of class (team) work, where we get work together and use what we know collectively to learn.'

Second Year Computer Science Student

I would recommend this college



I am really enjoying this subject and building great friendships and even a great relationship with my teacher, easily my favourite subject so far and although I am struggling here and there as I am completely new to the subject, I am willing to get my head down and work hard to improve.

First Year Media Studies Student

AMAZING RESPONSE TO OUR FOOD BANK APPEAL

We have had an amazing response to our West End Food Bank Appeal. This annual activity is run and managed by our A2L3 GCSE Citizenship class, and this year we saw an amazing response, as can be seen in the images below.

Pictured are Noran Swies, Charlotte Hope, Tio Riotibi and Clinton Oghogho.

This has been a very challenging year for so many people and to see the kindness, generosity and positive activity of our students and staff is a great way to end the term.



PERSONAL DEVELOPMENT - UCAS UPDATE

Year 2 students are submitting their UCAS applications, as Career Research and exploration into current labour market information in the North East comes to a close.

The internal UCAS deadline was December 7th, and the quality of applications we've seen this year include some wonderful personal statements, from aspiring Aerospace Engineers, to Primary School Teachers.

As we aim to widen participation in Higher Education and raise students' aspirations, those applying to university can still contact their Personal Development Coach in email, for any advice and guidance on pursuing accommodation research, accepting offers, and will cover 'What is Clearing?' in the Spring Term.

Not applying to university? As we know, employment with training is difficult to secure in the current labour market, so we'd strongly recommend a dual application to university with deferred entry. Personal Development lessons are currently covering a Money Management Course with Level 1 certification, and we'll be re-capping the drafting of effective cover letters to send to qualification providers.



STUDENT MAGAZINE GEORDIE OBSERVER



This week saw the launch of our Christmas edition of our student led magazine, with a seasonal edition crammed with great articles and content. Copies of the newsletter are available in limited supply at the entrance to college and from reception and we have launched the newsletter as an online flipbook magazine edition.

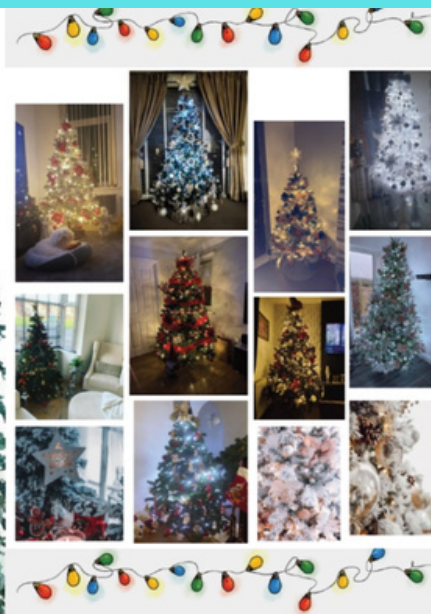
[CLICK HERE](#) to read the Christmas edition.

HOWAY LET'S GET DOON TO BUSINESS... AND TALK TREES!

The christmas tree goes back many years, all the way back to Ancient Egypt and Rome. It is generally a German tradition that has, over time, made its way into British culture and yearly traditions carried out by the majority of the british public as a way of celebrating christmas throughout December. Fun- nily enough, long before the advent of christianity, plants that remained green all year long had a special meaning for people in the winter time. In present day, people like to decorate their homes with artificial Christmas trees that resemble pine trees, dressing them with tinsel, ribbons and baubles. In many different countries it was believed that evergreens would keep away witches, ghosts and evil spirits.

So we thought we would include some of our christmas trees we have decorated at home-hopefully we can inspire you for your christmas decorations next year!

Geordie Edition



Magdalena Patrascu

ENRICHMENT 2021

Our NSFC Enrichment programme will begin in January 2021. By Easter 2021, all A2L3 and Y12 students need to have completed at least 6 hours of Enrichment. You will record this on Unifrog and this will be checked by your PDC.

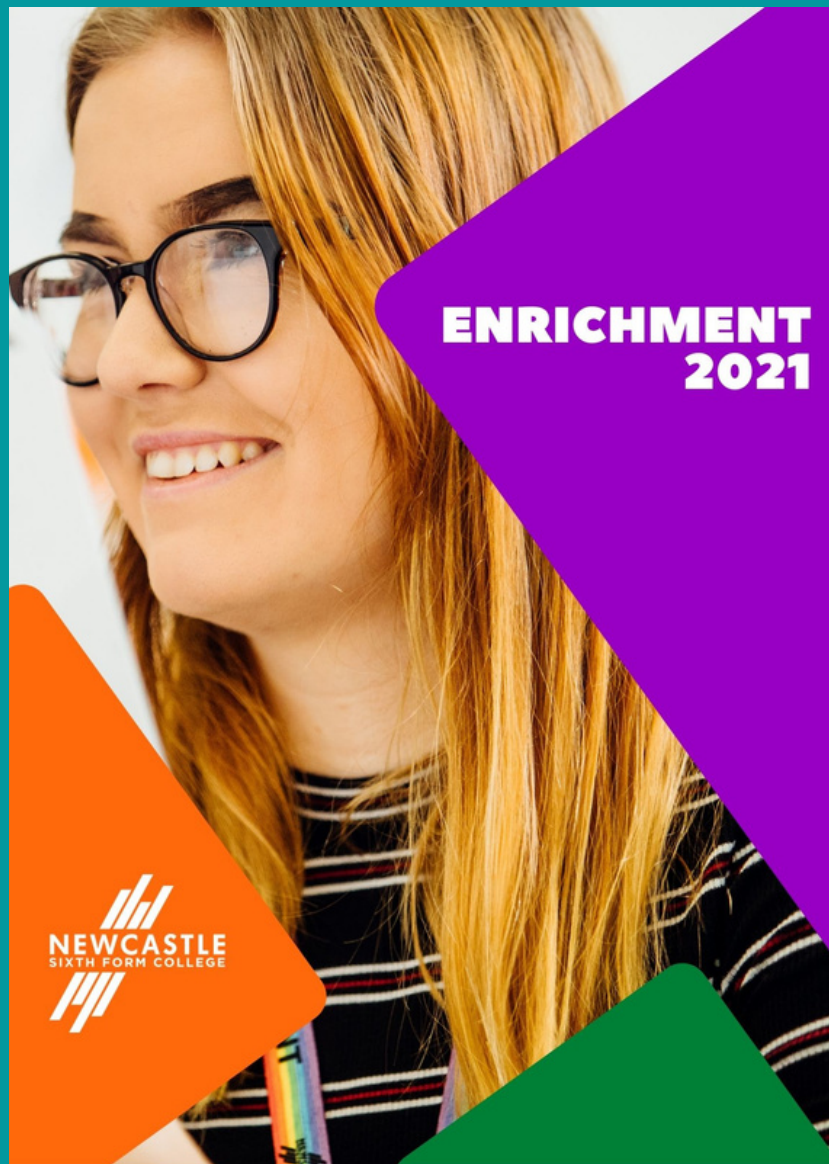
There are some Enrichment Activities that are also open to Y13 students. Enrichment activities help you to build up transferable skills that will benefit you as you progress through your education and into your careers. You should sign up for at least one enrichment activity.

If you have any questions about specific Enrichment activities you should email the member of staff directly.

If you have any general questions about Enrichment you should speak your PDC.

You can access the programme and make your choice by Clicking the link below.

You can still book your Enrichment for 2021 if you have not already done so.



» Enrichment 2021



MASKS ON THE MOVE

**Please help fight the spread of COVID19
You must wear a face covering in all
public spaces around the college.**

**WE WANTED TO THANK ALL STUDENTS FOR
THEIR SUPPORT THIS TERM IN CONTINUING
TO SUPPORT EACH OTHER AND RESPECT THE
COLLEGE ENVIRONMENT. HAVE A VERY
HAPPY CHRISTMAS AND GREAT 2021**

